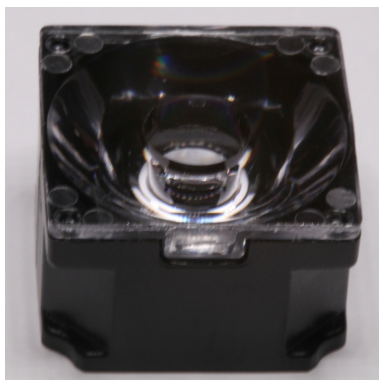




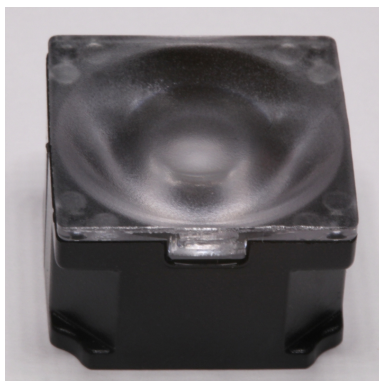
Ordering number FA10678
Description FA10678_CMC-SS

Family	Rose	FWHM	20 degrees
Type	Lens	Efficiency	-
LED	MC-E	cd/Im	-
Color	Black	Gerber File	Available
Diameter	21.6 mm		
Height	13.8 mm		
Style	Square		
Optic Material	PC		
Holder Material	PC		
Fastening	-		
Status	Ready		



Ordering number FA10679
Description FA10679_CMC-RS

Family	Rose	FWHM	20 degrees
Type	Lens	Efficiency	90 %
LED	MC-E	cd/Im	-
Color	Black	Gerber File	Available
Diameter	21.6 mm		
Height	13.8 mm		
Style	Square		
Optic Material	PC		
Holder Material	PC		
Fastening	-		
Status	Ready		



Ordering number FA10677
Description FA10677_CMC-D

Family	Rose	FWHM	22 degrees
Type	Lens	Efficiency	90 %
LED	MC-E	cd/Im	-
Color	Black	Gerber File	Available
Diameter	21.6 mm		
Height	13.8 mm		
Style	Square		
Optic Material	PC		
Holder Material	PC		
Fastening	-		
Status	Ready		



Ordering number FA10676
Description FA10676_CMC-M

Family	Rose	FWHM	30 degrees
Type	Lens	Efficiency	85 %
LED	MC-E	cd/Im	-
Color	Black	Gerber File	Available
Diameter	21.6 mm		
Height	13.8 mm		
Style	Square		
Optic Material	PC		
Holder Material	PC		
Fastening	-		
Status	Ready		



Ordering number FA10714
Description FA10714_CMC-W

Family	Rose	FWHM	36 degrees
Type	Lens	Efficiency	83 %
LED	MC-E	cd/Im	-
Color	Black	Gerber File	Available
Diameter	21.6 mm		
Height	13.8 mm		
Style	Square		
Optic Material	PC		
Holder Material	PC		
Fastening	-		
Status	Ready		



Ordering number FA10680
Description FA10680_CMC-O

Family	Rose	FWHM	42+20 degrees
Type	Lens	Efficiency	84 %
LED	MC-E	cd/Im	-
Color	Black	Gerber File	Available
Diameter	21.6 mm		
Height	13.8 mm		
Style	Square		
Optic Material	PC		
Holder Material	PC		
Fastening	-		
Status	Ready		



Ordering number 4FA11155
Description 4FA11155_CMC-O-90

Family	Rose	FWHM	42+20 degrees
Type	Lens	Efficiency	-
LED	MC-E	cd/Im	-
Color	Black	Gerber File	Available
Diameter	21.6 mm		
Height	13.8 mm		
Style	Square		
Optic Material	PC		
Holder Material	PC		
Fastening	-		
Status	Ready		

NOTE: The typical divergence will be changed by different color, chip size and chip position tolerance. The typical total divergence is the full angle measured where the luminous intensity is half of the peak value.



PRODUCT DATASHEET CMC series



GENERAL INFORMATION

- Product series especially designed & optimized for MC-E series of LEDs.
- Special care taken to make light distribution as uniform as possible.
- Lens material optical grade PC with high UV and temperature resistance (120 degrees of Celcius / 248 degrees of Fahrenheit). Allows use of high current and temperature conditions.

Please find more information about used materials from below:

http://ledil.fi/sites/default/files/Documents/Technical/Material/PC%20Makrolon%202400_2407_2456_2458-UL.pdf

- Optic holder molded by high quality PC material (120 dergees of Celcius / 248 degrees of Fahrenheit).

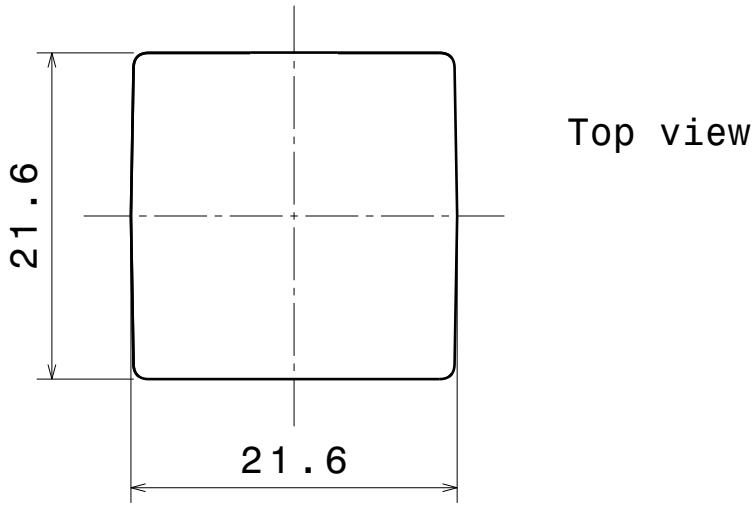
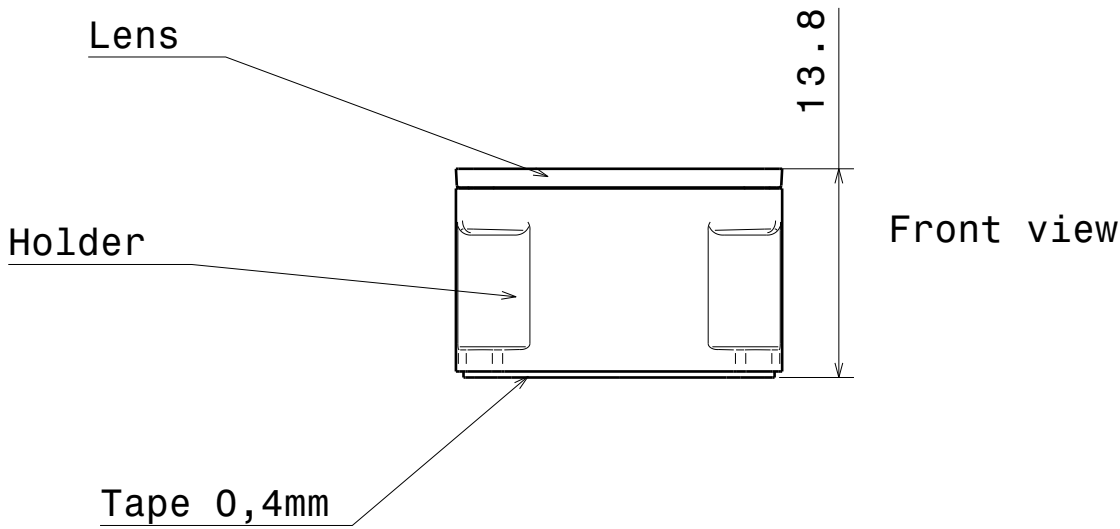
D C B A

4

3

2

1



MATERIALS
Lens: PMMA
Holder: PC, black
tape: PU Foam with PSA adhesive, Black

This drawing is our property.
It can't be reproduced
or communicated without
our written agreement.



L
T
F
F

e
e
l
i
N
n

d

DRAWING TITLE

Datasheet Rose CMC-series assy

DRAWN BY
p

DATE
21.11.2008

CHECKED BY
t k

DATE
08.10.2008

DESIGNED BY
hh

DATE
08.09.2008

SIZE
A4

DRAWING NUMBER

REV
1

SCALE 2:1

WEIGHT (g) -

SHEET 1 / 1

D A